



gaslux

GAS DETECTOR *For Everyone*

CT

GAS CONTROL PANEL



PRODUCT OVERVIEW

gaslux CT is gas control panel can connect up to 132 gas detectors, which can realize remote signal transmission; at the same time, it can control solenoid valves, exhaust fans, motors, water pumps, sound and light alarms, spray systems, machinery and equipment, etc to realize automatic job. It can achieve the integration of remote monitoring and cloud monitoring, which is convenient for users to conduct real-time and accurate management and grasp the alarm status in time. The gas control panel has a wide range of applications, such as chemical waste gas monitoring, environmental monitoring stations, engineering tunnels, laboratories, exhaust gas monitoring, environmental protection companies and so on.





gaslux

GAS DETECTOR *For Everyone*

PRODUCT FUNCTION

Multiple operation modes, convenient for use

- 7-inch high-definition color screen display, can support touch operation with 2 buttons at the same time, also supports button operation
- Modular design supports flexible custom configuration
- Standard RS485 signal input and output, up to 100 gas detectors can be connected
- Can support 4~20mA signal acquisition input of 8 to 32 channels, and can connect up to 32 gas detectors (optional)
- Can support 16 channels of 4~20mA signal output (optional)
- Support up to 6 relays, standard 4 relays, can add 2 relays as optional option
- The controller and the controller can communicate with each other (optional)

Powerful data storage function, convenient for users to view historical data

- Standard 1000 sets of alarm events and off-event records, users can view on controller
- Standard SD card storage function, can store 100,000, larger capacity can be customized
- The storage interval can be set arbitrarily, and the time, real-time concentration value, alarm information, etc can be recorded
- Can support SD card and U disk to export data by one key, which is convenient for users to view or delete records

Multiple display modes can be switched

- Each screen displays 6 channels gas concentration, displays the concentration value unit, and real-time curve of the single channel in large font
- Auto-loop and manual loop can be switched between channels
- The device name can be customized, and the high and low alarm values can be set by users
- English interface can be switched by one key, more languages can be customized





Can support wireless transmission (optional)

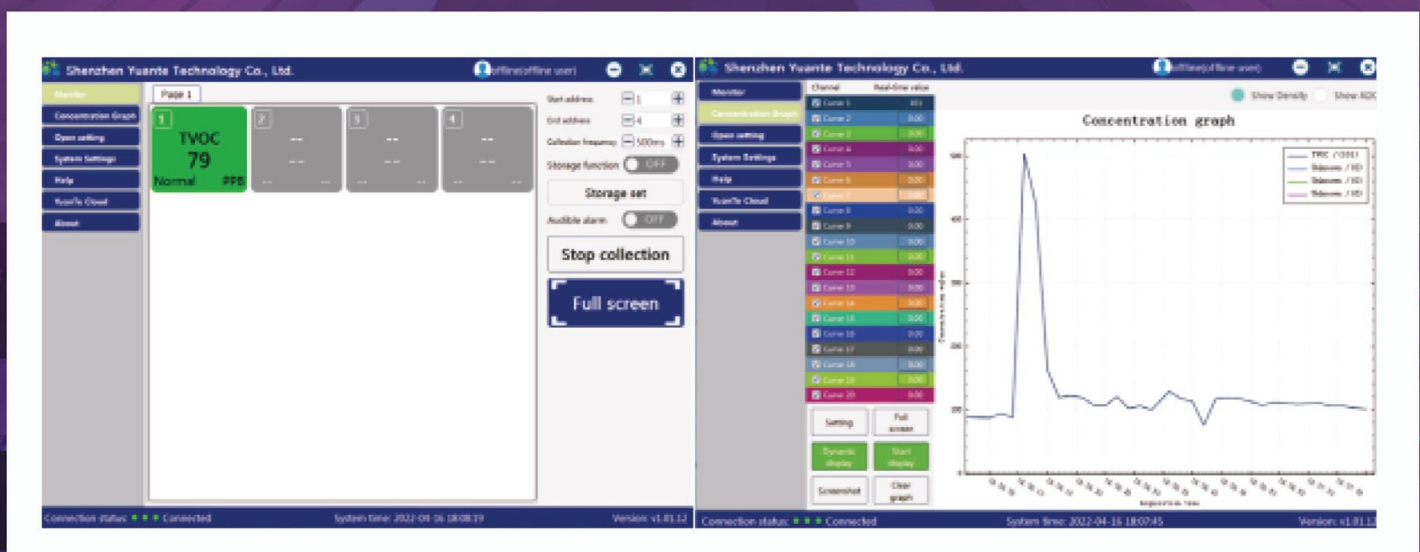
- Support LORA, WIFI, 4G wireless communication (optional)
- Data can be uploaded to its own cloud platform or other cloud platforms such as EPA
- Can provide SMS reminder function, and the transmission signal is not limited by distance
- Can be viewed in real time on the mobile app and computer

Powerful functions, can meet a variety of scenarios and applications

- Support one-key elimination alarm function
- Support remote program upgrade function
- Can support 4-20mA and RS485 signal input and output at the same time
- It can be connected to a computer, and the real-time concentration can be continuously monitored for 24 hours through the PC software, and the data can be automatically stored on the computer

Controller can be equipped with PC software (Optional)

The real-time concentration can be continuously monitored for 24 hours through PC computer software, and the data can be automatically stored on the computer. The curve graph of the data can also be viewed through the concentration trend, and the storage interval can be modified on the software to store and save the detected data.





gaslux

GAS DETECTOR *For Everyone*

PRODUCT SPECIFICATION

Installation method	Wall-mounted
Product size	464x280x100mm
Product weight	4.7kg
Host capacity	Supports up to 132 gas detectors
Display	7-inch 800*480 touch color screen
Display mode	Adaptive display channel number, automatic page turning
Alarm mode	Sound, light, interface display
Device name	Customizable name (Chinese and English)
Data storage	A total of more than 100,000 historical data (depending on the capacity of the SD card), 1,000alarms, 1,000 off-event records
Communication methods	RS485, 4-20mA, 4G, LORA, WIFI, etc.
Inspection interval	200ms (data collection time interval) Communication rate
Communication rate	9600bps (customizable)
Transmission distance	The maximum distance ≤ 1000 meters (determined by the quality of the cable)
Power input	AC 220V 50Hz ;
Power output	DC 24V, 0.25A/channel
Relay	Standard 4 relays (optional 2 relays), maximum support AC250V 10A load control switch
Working temperature	-10°C~ 50°C
Working humidity	$\leq 95\%$ RH, no condensation



CT

GAS CONTROL PANEL

